

# PITO™ roof anchor post Installed in a concrete slab

KP-04

Date  
28.1.2026

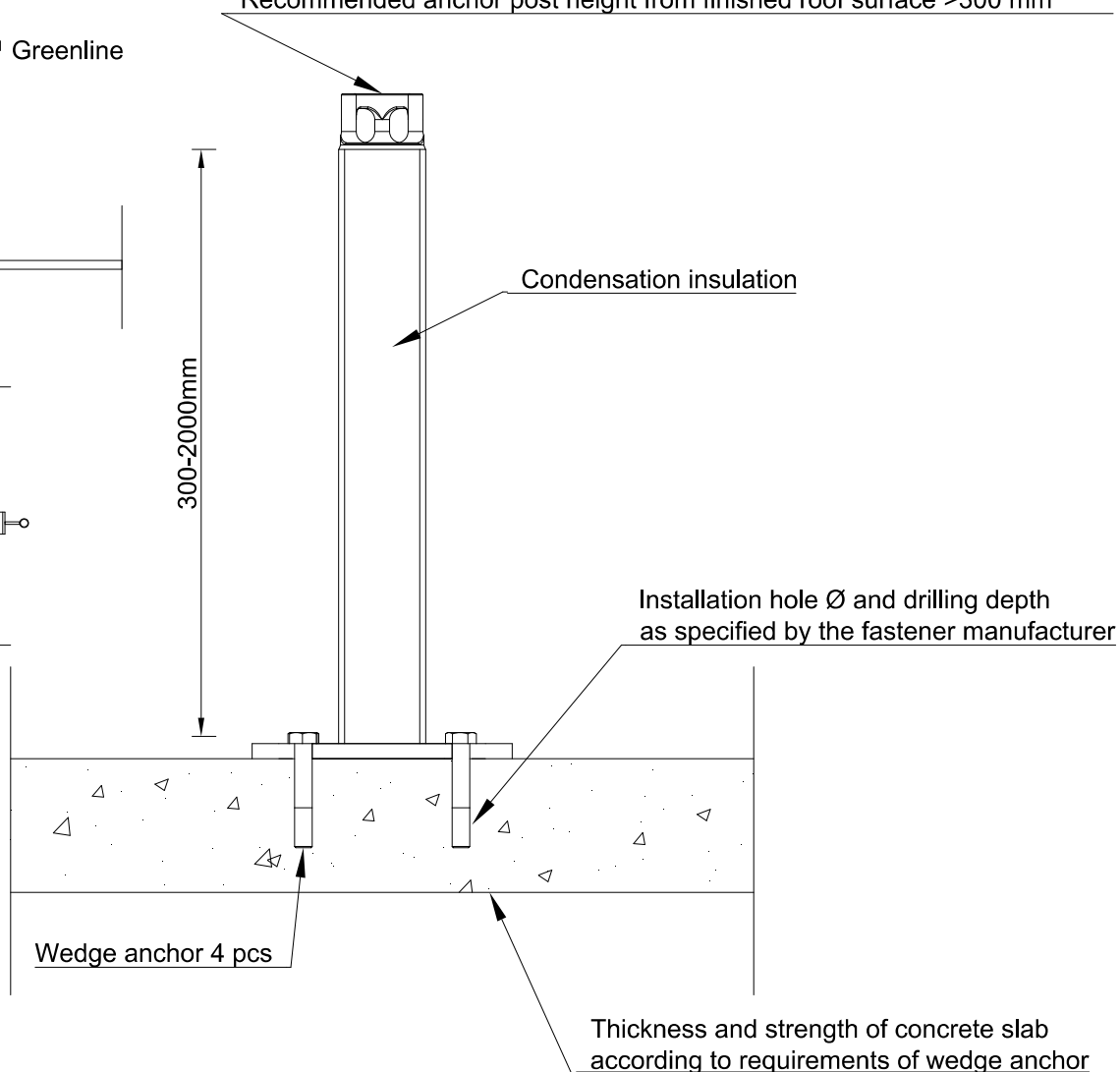
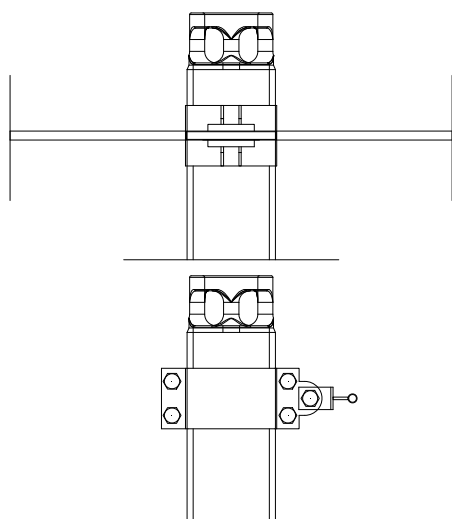
Scale  
1:10



- The product is hot-dip galvanised and the pipe has condensation insulation on the inside.
- The maximum live load is 5 kN.
- Dimensioned so that the loop remains at least 300 mm above the roof surface.
- Can be painted in RR colours.
- Meets the requirements of the suspended access equipment standard SFS-EN 1808 + A1 and the fall protection equipment standard EN 795:2012.
- PITO™ roof anchor posts have a verification certificate from Kiwa Inspecta Sertifiointi.
- Can be used as an individual anchor point or as part of a lifeline system. Max 4 users at the same time.

PITO™ roof anchor post heights 300–2000 mm  
Heights at 100 mm intervals up to 1000 mm and at 200 mm above 1000 mm  
Recommended anchor post height from finished roof surface >300 mm

Alternative: PITO™ Greenline  
lifeline system



Anchor post	Wedge anchor type	Mounting depth (min)	Thickness of structure (min)
Height 300–700 mm	HSA-F M16x182	65 mm	140 mm
Height 800–1000 mm	HSA-F M16x182	80 mm	160 mm
Height 1200–1500 mm	HSA-F M16x182	120 mm	180 mm
Height 1600–1800 mm	HSA-F M20x170	115 mm	220 mm
Height 1900–2000 mm	HVU M16+HAS-E-F	125 mm	160 mm